



# 2026 Zhik Vic Youth Championships

## 11-12 April 2026



### Sailing Instructions (SIs)

The Organising Authority (OA) is Sorrento Sailing Couta Boat Club (SSCBC), in conjunction with Australian Sailing.

#### 1. RULES

- 1.1. The event is governed by the rules as defined in The Racing Rules of Sailing.

#### 2. CHANGES TO SAILING INSTRUCTIONS

- 2.1. Any change to the sailing instructions will be posted at least 90 minutes prior to the first warning signal on the day it will take effect except that any change to the format or schedule of races will be posted on the Official Notice Board (ONB) by 1900 on the day before it will take effect.

#### 3. COMMUNICATION WITH COMPETITORS

- 3.1. Notices to competitors will be posted on the official notice board located at <https://sailingresults.net/sa/notice/?ID=82171>
- 3.2. The Regatta Office is located downstairs in the SSCBC Club clubhouse.

#### 4. CODE OF CONDUCT

- 4.1. **[DP]** Competitors and support persons shall comply with reasonable requests from Race Officials and Australian Sailing staff.
- 4.2. **[DP]** Competitors and Support Persons shall comply with the [Australian Sailing Integrity Policies](#).
- 4.3. **[DP]** Boats shall not sail into other course areas whilst the other course areas are racing. Boats not racing shall remain clear of boats that are racing and official boats.

#### 5. SIGNALS MADE ASHORE

- 5.1. Signals made ashore will be displayed on the flag mast located at the Eastern flag mast near the jetty.
- 5.2. When flag 'AP' is displayed ashore, '1 minute' is replaced with 'not less than 30 minutes' in Race Signals AP.
- 5.3. **[SP]** When flags AP over H are displayed from a Race Committee vessel, races not started are *postponed* and those boats shall immediately return ashore and wait there for further signals. When flags N over H are displayed from a Race Committee vessel, all races are *abandoned* and all boats shall immediately return ashore and wait there for further signals. This changes Race Signals AP over H and N over H.
- 5.4. **[SP] [NP]** Flag D with one sound means 'Boats shall not leave the shore until this signal is made. The warning signal will not be made before the scheduled time or less than 30 minutes after flag D is displayed.'

## 6. SCHEDULE OF RACES

### 6.1.

Date	Classes	Warning	Races
Saturday 11 <sup>th</sup> April	All Classes	1130	Up to four races
Sunday 12 <sup>th</sup> April	All Classes	1100	Up to four races

6.2. The warning signal for each succeeding race in a session will be made as soon as practicable after the completion of the previous race.

6.3. To alert boats that a race or sequence of races will begin soon, the orange starting line flag will be displayed with one sound at least five minutes before a warning signal is made.

6.4. On the last scheduled day of racing no warning signal will be made after 1500 hrs.

## 7. CLASS FLAGS

7.1. Class flags are described in Annex C.

## 8. COURSE AREAS

8.1. Annex B shows the approximate location of the course areas.

## 9. COURSES

9.1. The diagrams in Annex C show the courses, including the approximate angles between legs, the order in which marks are to be passed, and the side on which each mark is to be left.

9.2. No later than the warning signal, the Race Committee vessel may display the approximate compass bearing of the first leg.

9.3. If one of the gates marks is not laid, then the laid mark shall be left to port.

## 10. MARKS

10.1. Marks are described in Annex C.

## 11. THE START

11.1. Class fleets may be started in any order, and some class fleets may be started together.

11.2. The starting line is between a staff displaying an orange flag on the signal vessel at the starboard end and the course side of the port-end starting mark.

11.3. A barging buoy may be attached to the Race Committee vessel. Boats shall not pass between this buoy and the Race Committee vessel at any time.

11.4. **[DP]** Boats whose warning signal has not been made shall avoid the starting area during the starting sequence for other classes. The starting area is defined as a rectangle 50 metres from the starting line and marks in all directions.

11.5. A boat that does not start within 4 minutes after her starting signal, or Optimist, Minnow and O'pen Skiff classes 3 minutes, will be scored Did Not Start without a hearing. This changes RRS 35, Appendix A5.1 and Appendix A5.2.

11.6. Optimist Open and Intermediate, Minnow and O'pen Skiff races will be started by using the following signals:

<b>Minutes before starting signal</b>	<b>Visual signal</b>	<b>Sound signal</b>	<b>Means</b>
3	<i>Class flag</i>	<i>One</i>	<i>Warning signal</i>
2	<i>P, U, or black flag</i>	<i>One</i>	<i>Preparatory signal</i>
1	<i>Preparatory flag removed</i>	<i>One long</i>	<i>One minute</i>
0	<i>Class flag removed</i>	<i>One</i>	<i>Starting signal</i>

## 12. CHANGE TO THE NEXT LEG OF THE COURSE

- 12.1. Legs of the course will not be changed after the preparatory signal. This changes RRS 33.

## 13. THE FINISH

- 13.1. The finishing line is between a staff displaying a blue flag on the finishing boat at the starboard end and the course side of the port-end finishing mark.
- 13.2. Boats which are still deemed to be racing by the Race Committee but are outside the Finish Window may be scored an allocated place based on their position when the Time Limit expires. Such boats may be directed to return to the start area or other location without crossing the finish line. Neither the allocation of a finish place nor the failure to allocate a finish place will be grounds for redress. This changes RRS 35, RRS 61.4, RRS Appendix A5.1, A5.2 and A10.

## 14. TIME LIMITS AND TARGET TIMES

- 14.1.

<b>Class</b>	<b>Time Limit</b>	<b>Finish Window</b>	<b>Target Time</b>
ILCA 4 & 6, Sabre, Impulse 6.6	75	15	45
Optimist Open, 420	55	15	40
29er	55	15	30
All other classes	60	15	35

- 14.2. The Finishing Window is the time for boats to finish after the first boat sails the course. Boats failing to sail the course within the Finishing Window, will be scored Did Not Finish (DNF) without a hearing, except as provided for in SI 13.2. This changes RRS 35, RRS Appendix A5.1 and A5.2.
- 14.3. Failure to meet the Target Time will not be grounds for redress. This changes RRS 61.
- ## 15. HEARING REQUESTS
- 15.1. For each class, the protest time limit is 60 minutes after the last boat has finished the last race of the day or the race committee signals no more racing today, whichever is the later. The time will be posted on the official notice board
- 15.2. Protests shall be submitted via the link on the Official Notice Board or ask for a Protest form at the Regatta Office and return it there.
- 15.3. Notices will be posted no later than 30 minutes after the protest time limit to inform competitors of hearings in which they are parties. Hearings will be held in the Lacco Room, located downstairs at the Western end of the club.
- 15.4. Notices of protests by the Race Committee, Technical Committee or Jury will be posted to inform boats under RRS 61.1(b).

- 15.5. A list of boats that have been penalized under Appendix P for breaking RRS 42 will be posted on the Official Notice Board.
- 15.6. The Organising Authority has appointed a Non-Appealable Protest Committee for this event in accordance with RRS 91. Australian Sailing's approval of this appointment is posted on the ONB. The right of appeal from a protest committee hearing is denied as provided in RRS 70.3.
16. **SAFETY REGULATIONS**
- 16.1. **[SP]** Competitors shall wear lifejackets at all times while afloat, except briefly while changing or adjusting clothing or personal equipment.
- 16.2. Boats not leaving the beach for a scheduled race shall promptly notify the Regatta Office.
- 16.3. Before leaving to race on each scheduled race day or session, boats shall sign-on electronically using the online sign-on/off system.
- 16.4. **[SP]** Failure to sign on will result in that boat receiving a scoring penalty for the first race in the session. This changes RRS 63.1 and A5.
- 16.5. After each scheduled race day or session, the skipper shall sign off within the protest time limit.
- 16.6. **[SP]** Failure to sign off within the protest time limit will result in that boat receiving a scoring penalty for the last race in the session. This changes RRS 63.1 and A5.
- 16.7. Instructions for use of electronic sign on/off system:
- Boats shall provide a contact mobile phone number on the entry system.
  - Boats will receive a text message prior to the first race with a link to the sign on system.
  - Prior to leaving the shore, competitors shall click on the link, select the "Sign-on/off" link in the menu and select either "Sign on" or "Not Sailing Today".
  - On returning to shore after racing, boats shall click on the "Sign Off" link.
  - Boats are to register via the online system all scoring enquiries, lodge of protest, equipment and crew substitution.
  - If there are technology difficulties - sign on/off can be done at the Regatta Office.
- 16.8. **[DP]** A boat that retires from racing shall notify the Race Committee before leaving the racing area, or, if that is not possible, shall notify the Regatta Office as soon as possible after returning ashore and shall complete a retirement declaration form at the Regatta Office before the expiry of the protest time limit.
- 16.9. **[DP]** Race Officials and Race Committee vessels may retrieve boat crews and return them to their boats for safety reasons. The sail number of a boat which receives outside help will be notified to the Race Committee with details of the incident and a hearing may be held (if required) to determine any penalty. This changes RRS 41.
17. **[DP] EQUIPMENT AND MEASUREMENT CHECKS**
- 17.1. Equipment may be inspected at any time for compliance with the Class Rules and Sailing Instructions. When instructed by a member of the Technical Committee, a boat shall proceed immediately to a designated area for inspection.
- 17.2. Penalties for a breach of Class Rules are at the discretion of the jury and may be less than disqualification.
18. **OFFICIAL VESSELS**
- 18.1. Official vessels will be marked with an SSCBC Flag describing their role: J/U Jury, RC/Safety, Media.
- 18.2. Official vessels may display a flag indicating their respective course areas.

19. **[DP] EVENT ADVERTISING**

- 19.1. Boats shall display advertising for event sponsors in accordance with the [World Sailing Advertising Code](#), supplied by the Organising Authority as follows: All entrants will be supplied with two Zhik stickers.
- 19.2. For all dinghy classes, a Zhik sticker is to be applied to the hull of each boat on either side of the bow.

**ANNEXES**

- A. Standard Penalties
- B. Course Areas
- C. Course Descriptions



**STANDARD PENALTIES**

The Race Committee may apply the penalties below without a hearing when the applicable rules are broken.

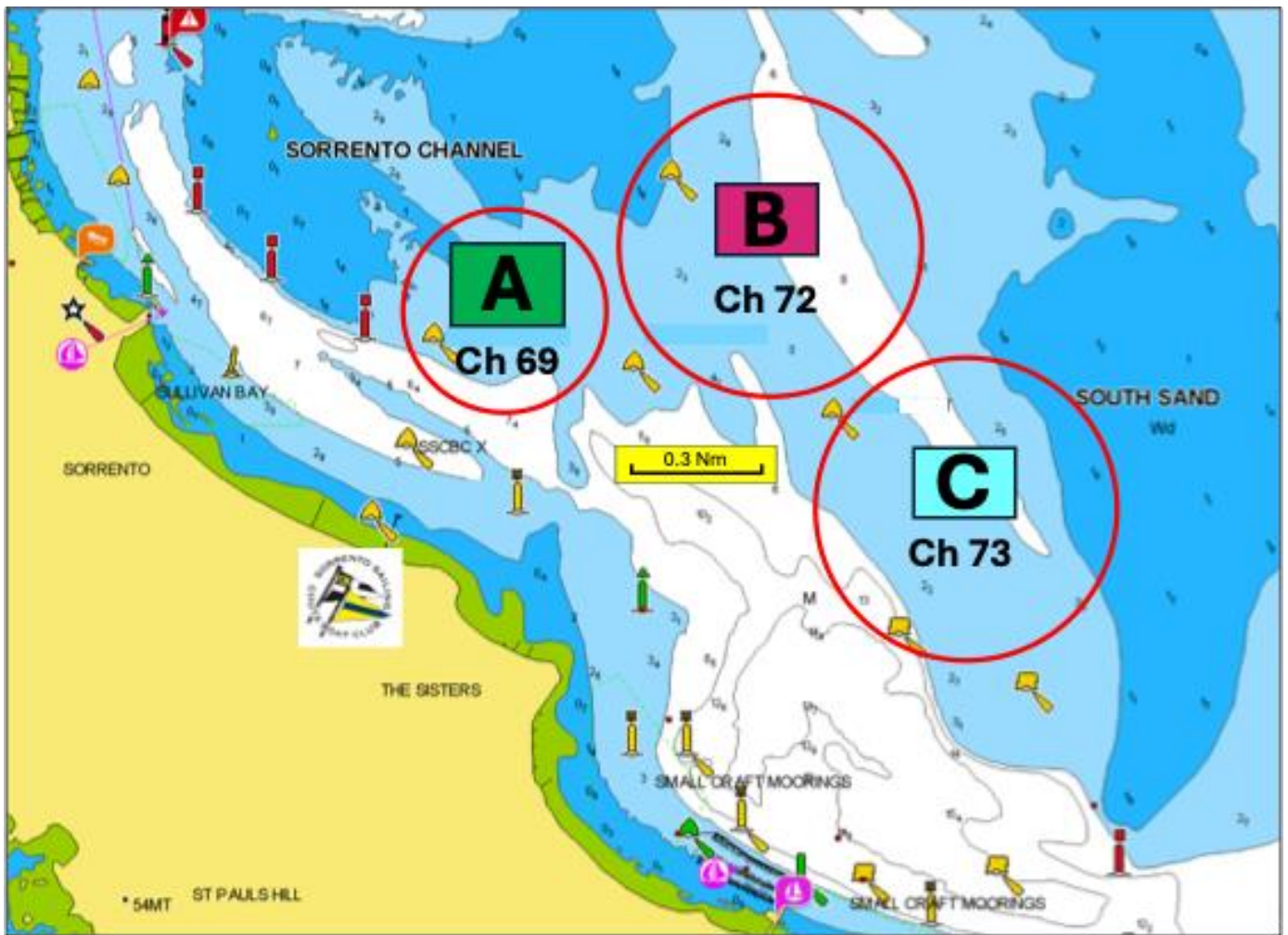
The Race Committee may protest a boat if it considers a standard penalty is inappropriate.

The penalty when applied will not make a boat's score worse than DNF.

<b>Sailing Instruction</b>	<b>Breach</b>	<b>Standard Penalty</b>
5.3	Not returning to shore when flags AP/H or N/H are displayed from a race committee vessel	One point scoring penalty added to the previous race of the day, or the next race if no race has been completed
5.4	Launching before Flag D displayed	Five points scoring penalty on the first race of the session
16.1	Failure to wear a life jacket	Five points scoring penalty for all races sailed without a lifejacket
16.4	Not Signing On	Five points scoring penalty on the first race of the session
16.6	Not Signing Off	Five points scoring penalty on the last race of the session



COURSE AREAS





## COURSE DESCRIPTIONS

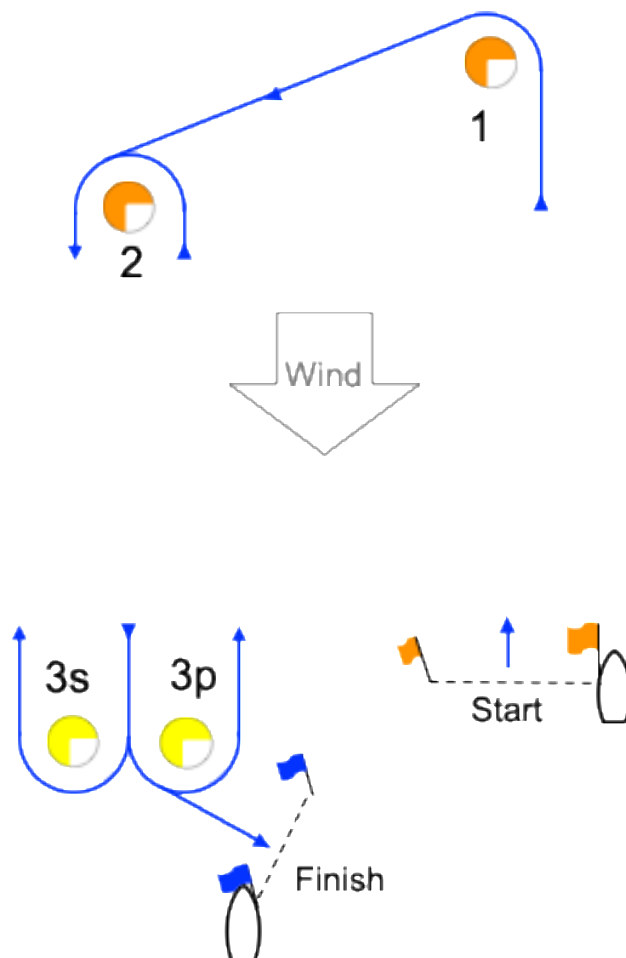
### ALPHA Course – VHF 69

Class	Class Insignia / Background
ALL CLASSES	<b>A</b>
Optimist – Open	Black / White
Optimist – Intermediate	White / Blue
Minnow	Black / Blue
O’pen Skiff	Black & Gold / Pink

CLASS	Mark Rounding Order
Optimist – Open	Start – 1 – 2 – 3p/3s – 2 – 3p – Finish
Optimist – Intermediate	Start – 1 – 2 – 3p – Finish
Minnow	Start – 1 – 2 – 3p – Finish
O’pen Skiff	Start – 1 – 2 – 3p/3s – 2 – 3p – Finish

#### Description of Marks

Start pin	Orange flag
Finish pin	Blue flag
Marks 1, 2	Orange
Marks 3s, 3p	Yellow



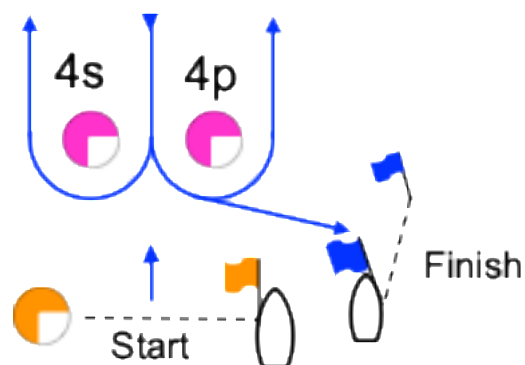
**BRAVO Course – VHF 72**

Class	Class Insignia / Background
ALL CLASSES	<b>B</b>
ILCA 6	Red / Green
ILCA 4	Red / Yellow
Sabre	Red / White
Impulse 6.6	Sabre class flag

CLASS	Mark Rounding Order
ILCA 6	Start – 1o – 4p/4s – 1o – 4p – Finish
ILCA 4	Start – 1i – 4p/4s – 1i – 4p – Finish
Sabre	Start – 1i – 4p/4s – 1i – 4p – Finish
Impulse 6.6	Start – 1i – 4p/4s – 1i – 4p – Finish

**Description of Marks**

Start pin	Orange
Mark 1o	Pink
Mark 1i	Pink with black band
Marks 4p & 4s	Pink
Finish pin	Blue flag



**CHARLIE Course – VHF 73**

Class	Class Insignia / Background
ALL CLASSES	<b>C</b>
29er	29er / Red
420	Blue / White
Int Cadet	Black / White

CLASS	Mark Rounding Order
420	Start – 1o – 4p/4s – 1i – 4p – Finish
29er	Start – 1i – 4p/4s – 1i – 4p – Finish
Int Cadet	Start – 1i – 4p/4s – 1i – 4p – Finish

**Description of Marks**

Start pin	Orange flag
Finish pin	Blue flag
Mark 1o	Yellow
Mark 1i	Orange with black band
Marks 4p/4s	Pink

